

CIV 2802 – Sistemas Gráficos para Engenharia – PUC-Rio

Roteiro para usar o app QtDesigner (Qt 5)

1. Instalação do pacote pyqt5-tools

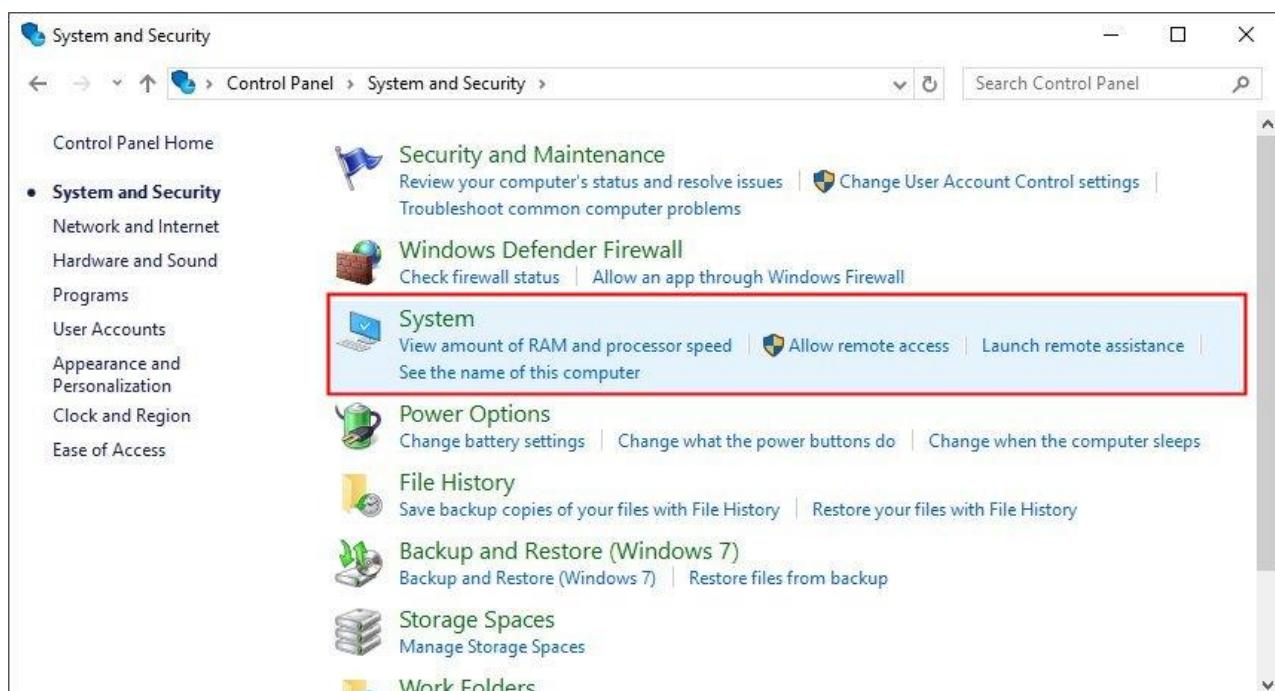
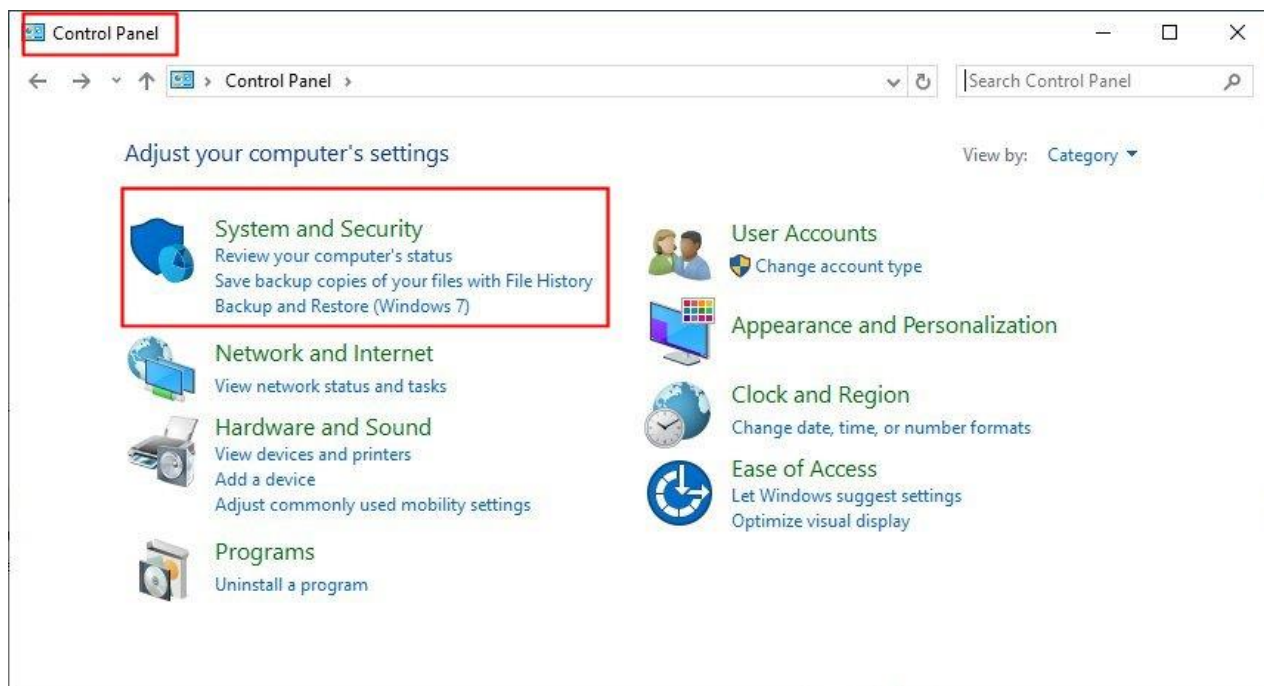
No terminal do Visual Studio Code:

```
pip install pyqt5-tools
```

2. Adição da pasta do pyqt5-tools no caminho (“path”) do usuário

Pasta:

```
C:\Users\<user>\AppData\Local\Programs\Python\Python39\Lib\site-packages\qt5_applications\Qt\bin
```



Settings

Home

Find a setting

System

- Display
- Sound
- Notifications & actions
- Focus assist
- Power & sleep
- Battery
- Storage
- Tablet
- Multitasking
- Projecting to this PC
- Shared experiences
- System Components
- Clipboard
- Remote Desktop
- Optional features
- About

About

Your PC is monitored and protected.

[See details in Windows Security](#)

Device specifications

Device name	DESKTOP-LFRLKGG
Processor	11th Gen Intel(R) Core(TM) i7-1165G7 @ 2.80GHz 2.80 GHz
Installed RAM	8,00 GB (7,70 GB usable)
Device ID	9E7A313E-DE90-4BA5-9F79-481B40F0DF88
Product ID	00342-22009-12086-AAOEM
System type	64-bit operating system, x64-based processor
Pen and touch	No pen or touch input is available for this display

Copy

Rename this PC

Windows specifications

Edition	Windows 10 Home
Version	22H2
Installed on	30/01/2024
OS build	19045.4046
Experience	Windows Feature Experience Pack 1000.19053.1000.0

Copy

[Change product key or upgrade your edition of Windows](#)

[Read the Microsoft Services Agreement that applies to our services](#)

[Read the Microsoft Software License Terms](#)

Related settings

- [BitLocker settings](#)
- [Device Manager](#)
- [Remote desktop](#)
- [System protection](#)
- [Advanced system settings](#)**
- [Rename this PC \(advanced\)](#)

Help from the web

- [Finding out how many cores my processor has](#)
- [Checking multiple Languages support](#)

[Get help](#)

[Give feedback](#)

System Properties

Computer Name Hardware **Advanced** System Protection Remote

You must be logged on as an Administrator to make most of these changes.

Performance
Visual effects, processor scheduling, memory usage, and virtual memory

Settings...

User Profiles
Desktop settings related to your sign-in

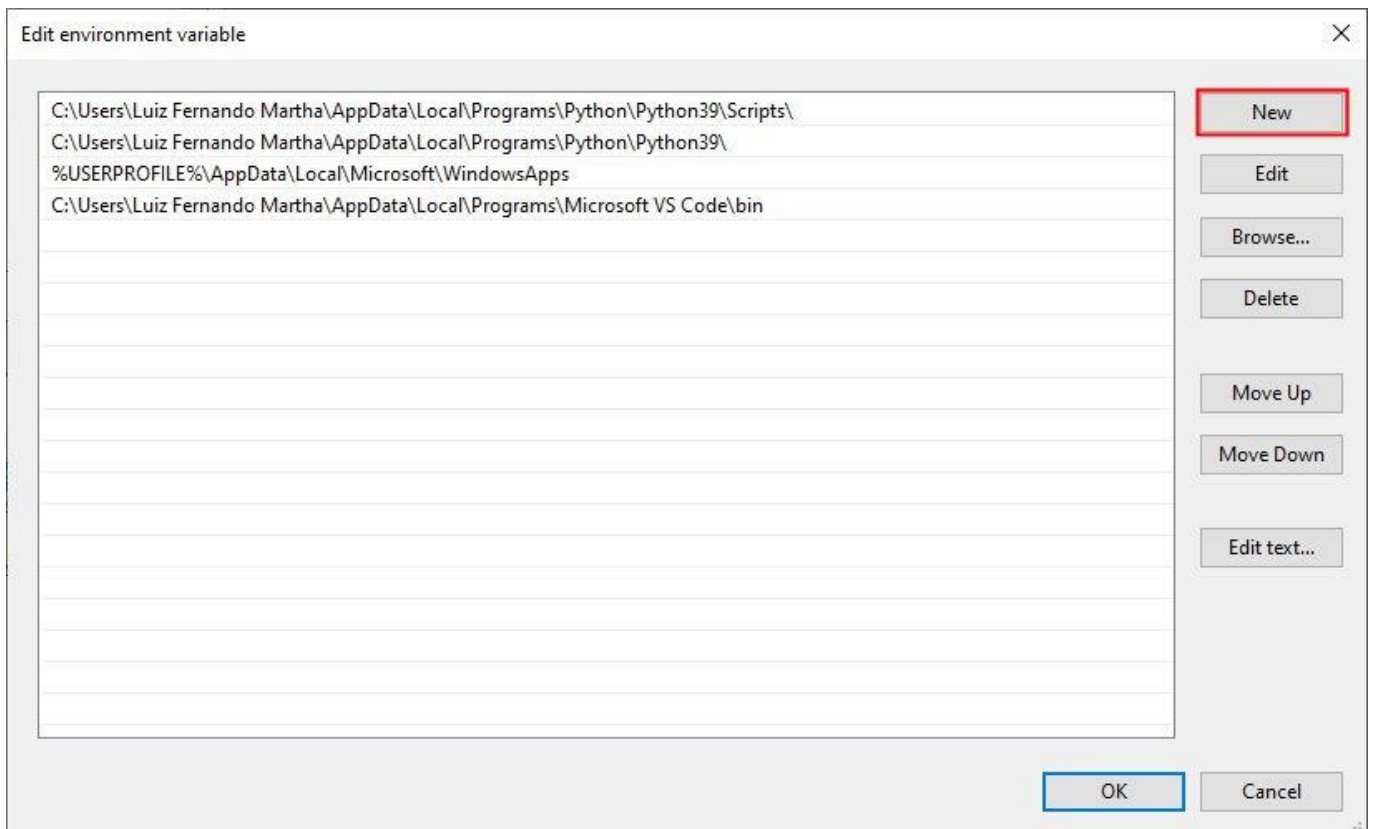
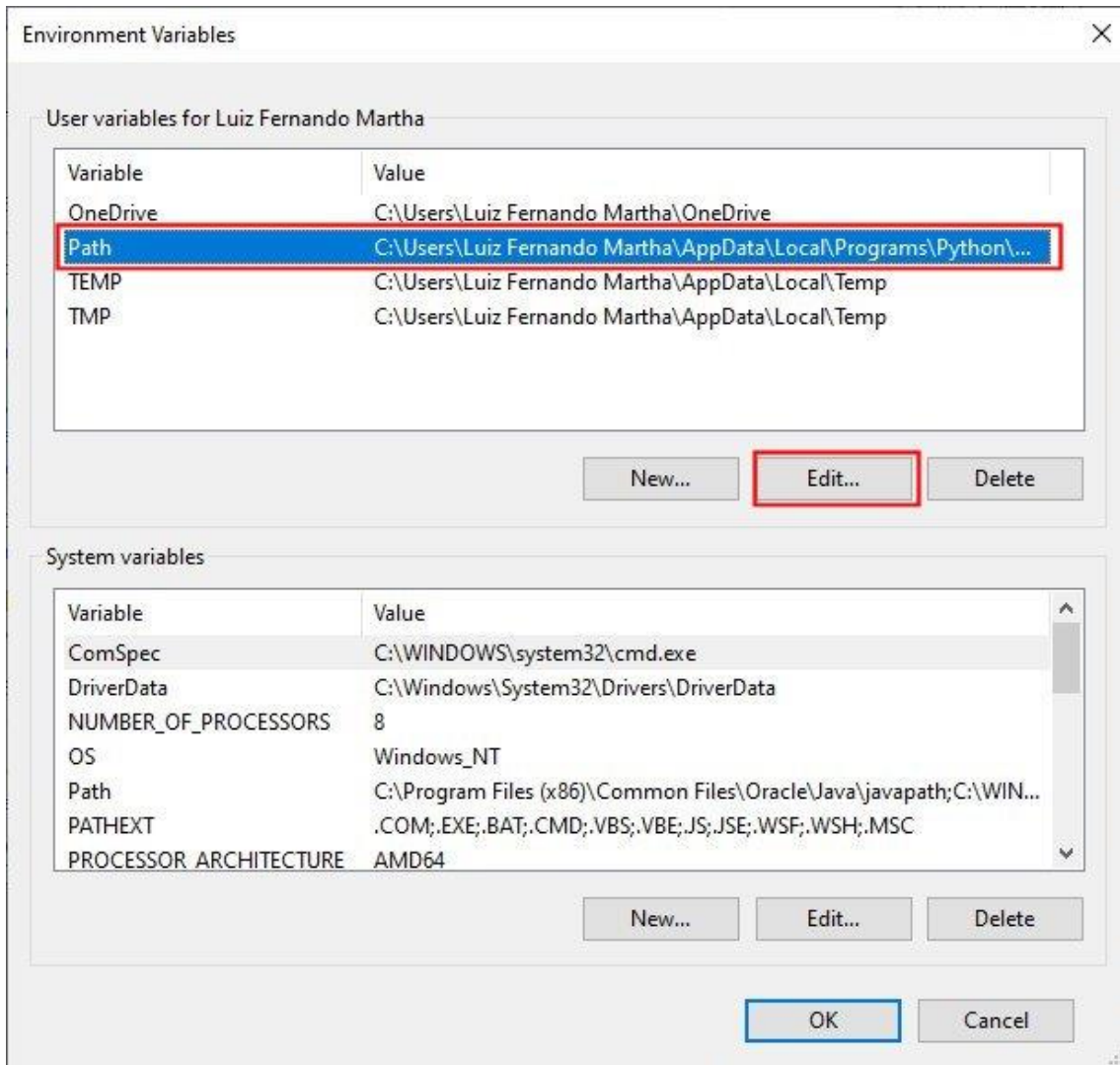
Settings...

Startup and Recovery
System startup, system failure, and debugging information

Settings...

Environment Variables...

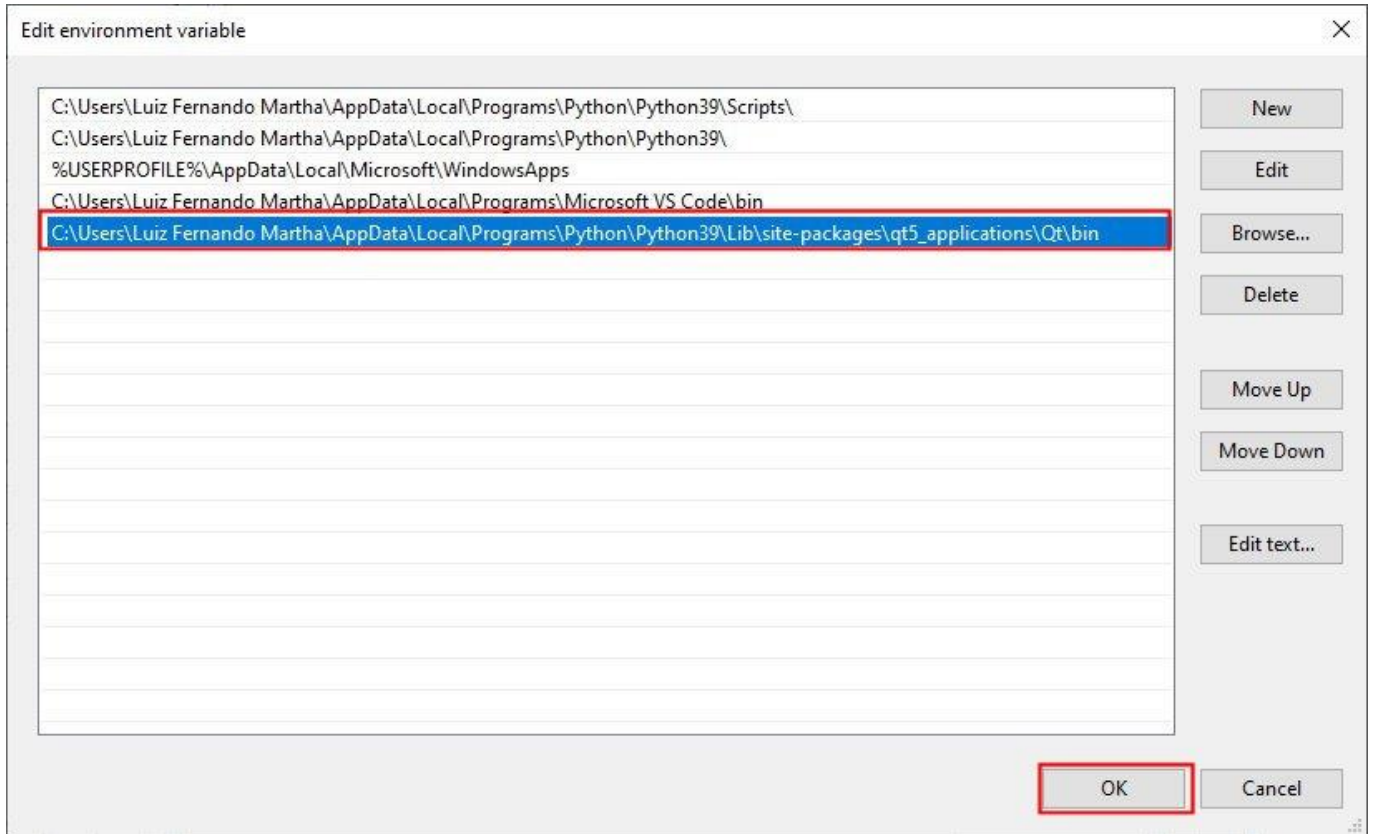
OK Cancel Apply



Pasta:

C:\Users**<user>**\AppData\Local\Programs\Python\Python39\Lib\site-packages\qt5_applications\Qt\bin

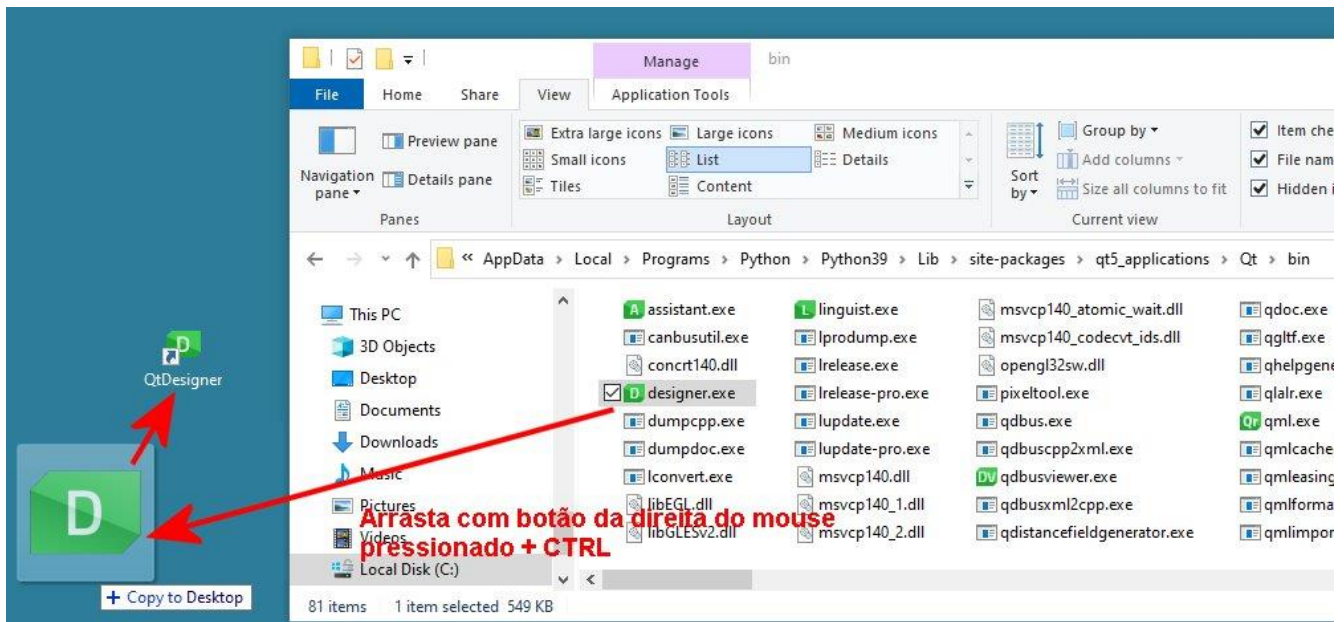
Em que, **<user>** é o nome do usuário:



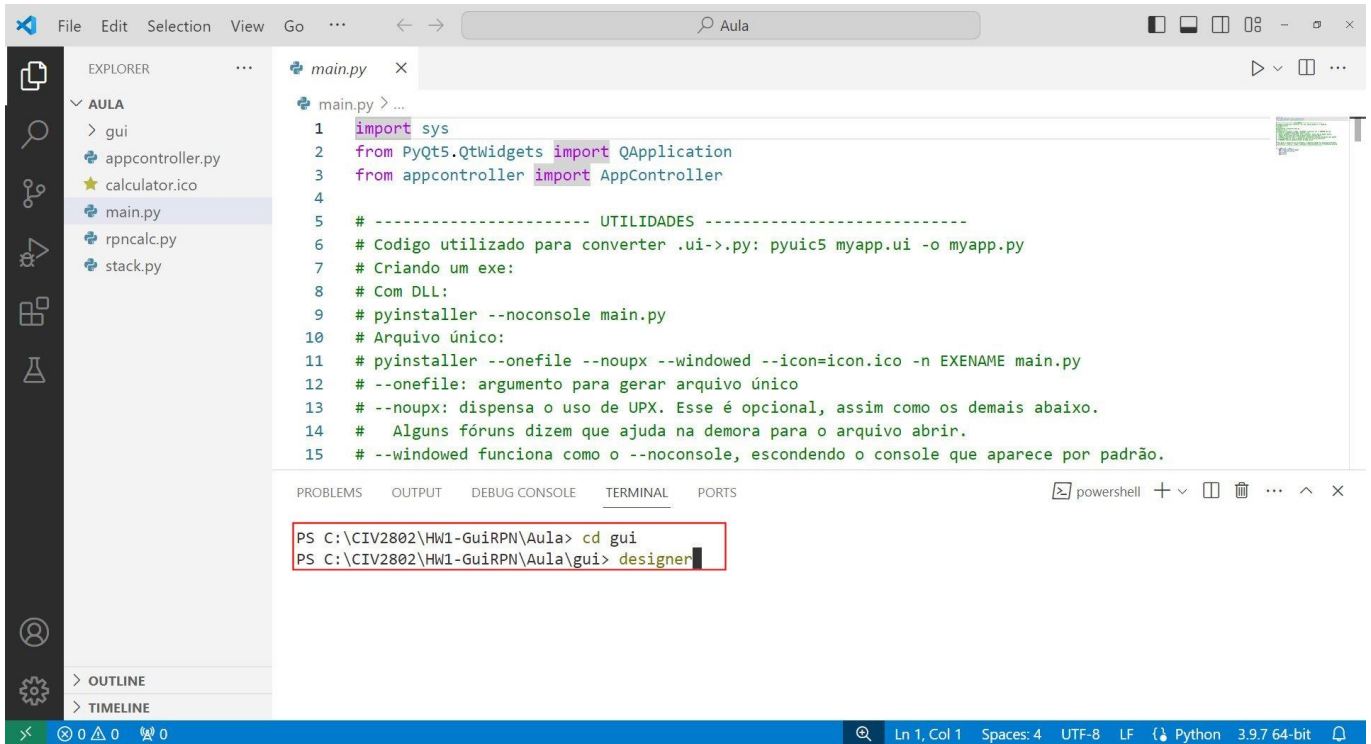
3. Criação de um atalho no desktop para o app QtDesigner

Na pasta

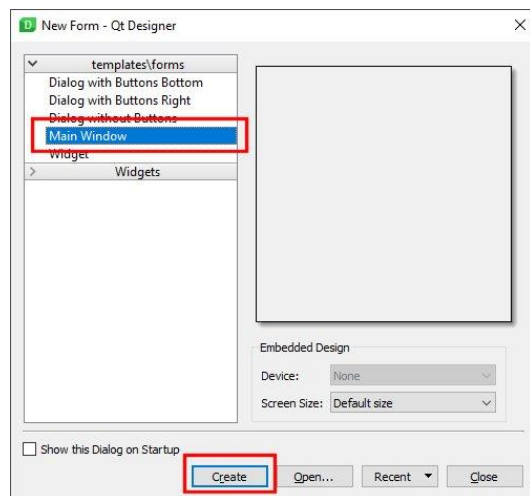
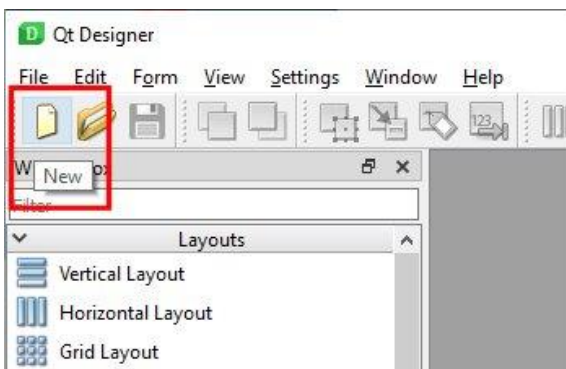
C:\Users**<user>**\AppData\Local\Programs\Python\Python39\Lib\site-packages\qt5_applications\Qt\bin



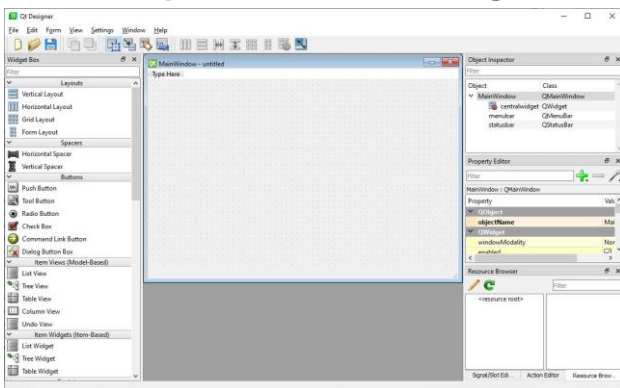
4. Uso do app QtDesigner no Visual Studio Code



5. Execute o programa QtDesigner e crie uma nova Qt Main Window



6. Pronto para criar interface gráfica



7. Salve arquivo com nome myapp.ui

